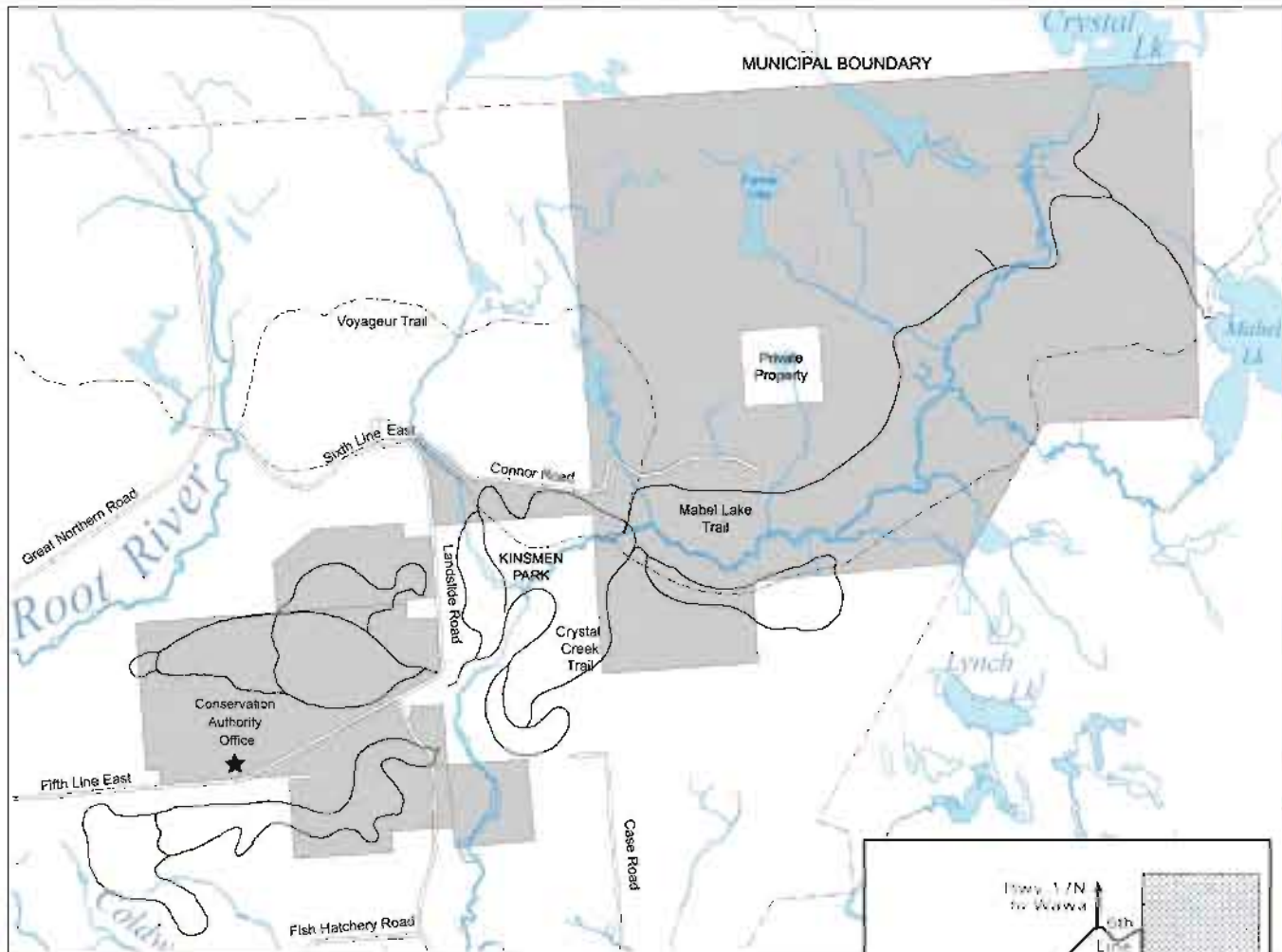


Hiawatha Highlands Conservation Area

Enjoy the Splendour
of our Backyard



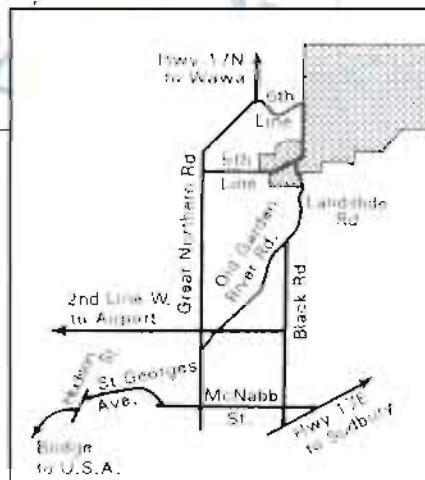
Legend

- Hiawatha Highlands Conservation Area
- Trail Systems
- ★ Conservation Authority Office
- Voyager Trail

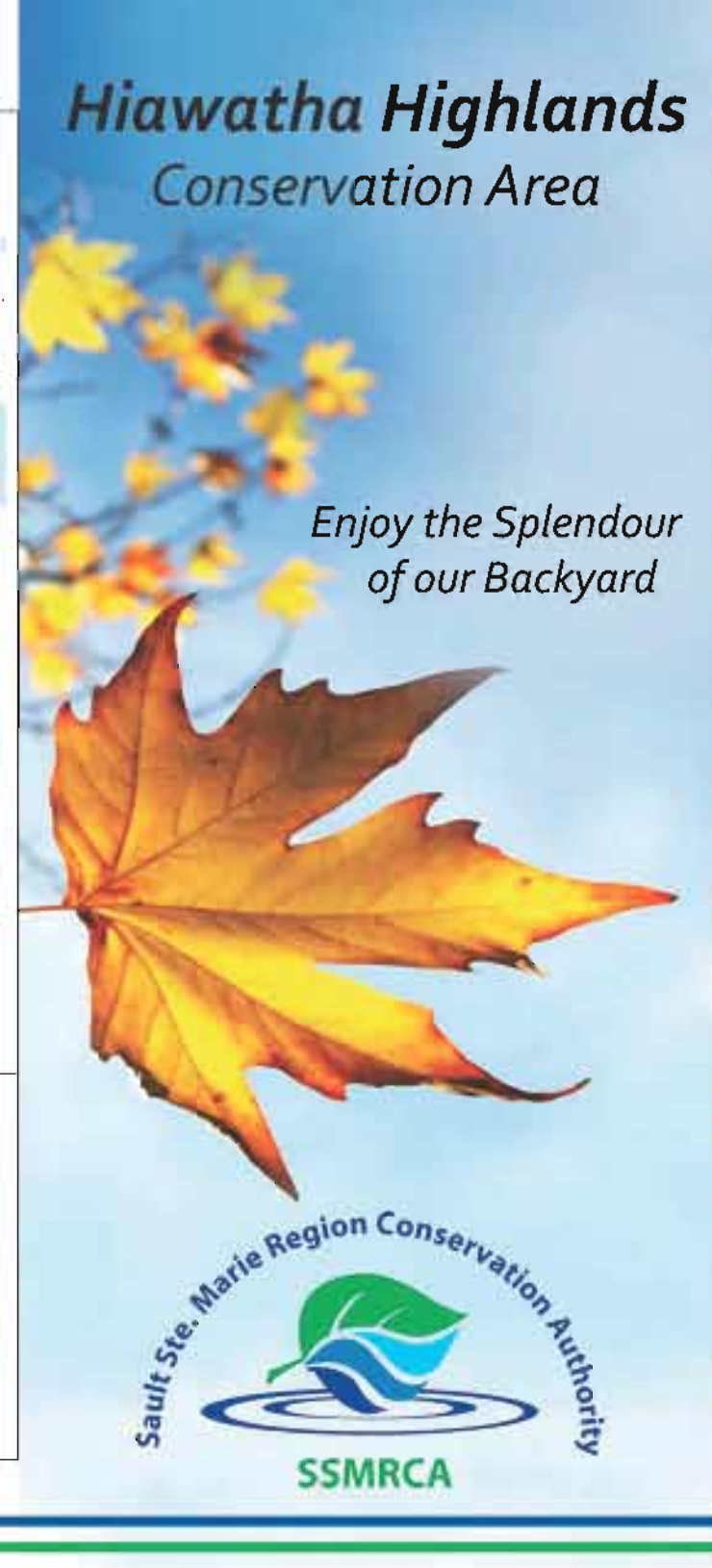
Area Regulations

- * No littering
- * Dogs must be on leash at all times
- * Motorized vehicles by permission only
- * No hunting or firearms
- * No fires except by permission

The SSMRCA reserves the right to remove any person from its properties.



This map is for illustrative purposes only. It should not be used for precise location of boundaries, routes, locations of features, nor as a guide to navigation



Something for Everyone

One of five conservation areas owned by the Sault Ste. Marie Region Conservation Authority, Hiawatha Highlands Conservation Area is located between Fifth and Sixth Lines, east of Great Northern Road (Hwy. 17 N). This day-use conservation area offers 892 hectares (2206 acres) of land containing trails, forests, creeks, lakes and wetlands.

Trail System

Many kilometers of trails wind their way through this majestic area. The network consists of the Lookout, Red Pine, Crystal Creek, Beaver and Mable Lake Trails offers diverse recreational opportunities such as hiking, fishing, canoeing, mountain biking, bird watching, snowshoeing and cross country skiing. The Voyageur Trail system passes through the property and provides a direct link to the surrounding area.

Thayer Acres

This undeveloped section of the Hiawatha Highlands has historically been used by local Scouts Canada and Girl Guides groups for practicing their outdoor skills. Other large groups are welcome however, reservations must be made in advance. Please contact the Sault Ste. Marie Region Conservation Authority Office.

The entrance to Thayer Acres is located at the end of Connor Road. Motorized vehicles are prohibited with the exception of seasonal use by agreement with the local snowmobile club, a member of the Ontario Federation of Snowmobile Clubs.

Diverse Forests

Established in the 1930's, the Red Pine plantation towers over the north side of Fifth Line East. The red pine is not as common as the white pine because it grows in small isolated areas. Red pine trees can reach heights of up to 24 metres and offer a gentle reminder of nature's magnificence.

Identified by its soft needles arranged in clusters of five, the White Pine has branches resembling outstretched arms. They provide valuable habitat for cavity-nesting wildlife and their seeds are a food source for songbirds.

A perfect example of the best known Canadian icon is the maple, the rainbow of colours displayed by their leaves in the fall is breathtaking. Valued for their sap during the spring sugaring, these trees are a striking reminder of our pioneer past.

Hiawatha Highlands contains areas of old-growth forest with some trees more than 100 years old.

These forests provide ideal habitat for wildlife including hare, moose, black bear, deer, beavers, woodpeckers, grouse and owls. This conservation area as well as others provide a diverse ecosystem and range of varied outdoor classroom opportunities for local students of all ages, training areas for Ministry of Natural Resources staff and scientific research.

Physical Geography

The Hiawatha Highlands has a unique geographic, climatic and geologic features that contribute to the continuance of source water quality and quantity in Sault Ste. Marie. The Highlands are located in a ground water recharge area.

The layer of sand and gravel underlying the surface soil is important for recharging the water supply. The spaces between the sand and gravel deposits allow for water to infiltrate and move downwards through the soil. The sand and gravel act as natural filters. The filtered water is retained in a groundwater aquifer which provides a portion of the municipal water supply.

It is important to all of us that the Hiawatha Highlands Conservation Area is used in a responsible manner by all. Please respect this natural area and note that littering, hunting, firearms, motorized vehicles, open fires and dumping household garbage are not permitted. Dogs are welcome but must be on leash and don't forget to clean up after your pet.

Environmental Education & Club Events

The Hiawatha Highlands Conservation Area offers students, teachers, Clubs and Organizations the perfect outdoor venue. The SSMRCA Classroom is a focal point providing shelter, washrooms, kitchen facilities and lunch area. To make arrangement to use the classroom facility, please contact the Sault Ste. Marie Region Conservation Authority office.

Hours of Operation

The SSMRCA office is open Monday through Friday from 8:30 am to 4:30 p.m.

We welcome area residents and visitors to Sault Ste. Marie to enjoy the Hiawatha Highlands Conservation Area. Admission to all of our conservation areas is free.

Area Attractions

Kinsmen Park - Adjacent to the Hiawatha Highlands Conservation Area is Kinsmen Park boasting 93 hectares (230 acres) of land maintained by the Kinsmen Club of Sault Ste. Marie. The park includes one of the most spectacular views of Crystal Falls from the Ecology Trail or Crystal Creek Trail. The park also includes a baseball diamond, children's playground, picnic area, and swimming area.

Cross Country Ski Trails - During the winter months the Soo Finnish Nordic Ski Club maintain 50 km of Nordic, cross country ski trails catering to both the beginner and advanced skiers. Season and day passes as well as trail information are available online at www.hiawathahighlands.com.

Crystal Creek Mountain Bike Trail - A single track mountain bike trail for intermediate to advance riders. Approximate riding time 45 minutes to 1 1/2 hours.

Tarentorous Fish Culture Station - Open 9 a.m. to 5 p.m. daily, allows visitors to see various trout species being reared for the Ministry of Natural Resource's fish release program.

Mockingbird Hill Farm - Visitors to the area can step back in time and explore a pioneer farm. More information is available online at www.mockingbirdhillfarm.ca.

SSMRCA

Since 1963, the Sault Ste. Marie Region Conservation Authority has played an important role by developing and providing a comprehensive watershed management program to the city of Sault Ste. Marie and Prince Township.



1100 Fifth Line East
Sault Ste. Marie, ON P6A 5K7
Tel: (705) 946-8530 Fax: (705) 946-8533
www.ssmrca.ca nature@ssmrca.ca

Something for Everyone

One of five conservation areas owned by the Sault Ste. Marie Region Conservation Authority, Hiawatha Highlands Conservation Area is located between Fifth and Sixth Lines, east of Great Northern Road (Hwy. 17 N). This day-use conservation area offers 892 hectares (2206 acres) of land containing trails, forests, creeks, lakes and wetlands.

Trail System

Many kilometers of trails wind their way through this majestic area. The network consists of the Lookout, Red Pine, Crystal Creek, Beaver and Mable Lake Trails offers diverse recreational opportunities such as hiking, fishing, canoeing, mountain biking, bird watching, snowshoeing and cross country skiing. The Voyageur Trail system passes through the property and provides a direct link to the surrounding area.

Thayer Acres

This undeveloped section of the Hiawatha Highlands has historically been used by local Scouts Canada and Girl Guides groups for practicing their outdoor skills. Other large groups are welcome however, reservations must be made in advance. Please contact the Sault Ste. Marie Region Conservation Authority Office.

The entrance to Thayer Acres is located at the end of Connor Road. Motorized vehicles are prohibited with the exception of seasonal use by agreement with the local snowmobile club, a member of the Ontario Federation of Snowmobile Clubs.

Diverse Forests

Established in the 1930's, the Red Pine plantation towers over the north side of Fifth Line East. The red pine is not as common as the white pine because it grows in small isolated areas. Red pine trees can reach heights of up to 24 metres and offer a gentle reminder of nature's magnificence.

Identified by its soft needles arranged in clusters of five, the White Pine has branches resembling outstretched arms. They provide valuable habitat for cavity-nesting wildlife and their seeds are a food source for songbirds.

A perfect example of the best known Canadian icon is the maple, the rainbow of colours displayed by their leaves in the fall is breathtaking. Valued for their sap during the spring sugaring, these trees are a striking reminder of our pioneer past.

Hiawatha Highlands contains areas of old-growth forest with some trees more than 100 years old.

These forests provide ideal habitat for wildlife including hare, moose, black bear, deer, beavers, woodpeckers, grouse and owls. This conservation area as well as others provide a diverse ecosystem and range of varied outdoor classroom opportunities for local students of all ages, training areas for Ministry of Natural Resources staff and scientific research.

Physical Geography

The Hiawatha Highlands has a unique geographic, climatic and geologic features that contribute to the continuance of source water quality and quantity in Sault Ste. Marie. The Highlands are located in a ground water recharge area.

The layer of sand and gravel underlying the surface soil is important for recharging the water supply. The spaces between the sand and gravel deposits allow for water to infiltrate and move downwards through the soil. The sand and gravel act as natural filters. The filtered water is retained in a groundwater aquifer which provides a portion of the municipal water supply.

It is important to all of us that the Hiawatha Highlands Conservation Area is used in a responsible manner by all. Please respect this natural area and note that littering, hunting, firearms, motorized vehicles, open fires and dumping household garbage are not permitted. Dogs are welcome but must be on leash and don't forget to clean up after your pet.

Environmental Education & Club Events

The Hiawatha Highlands Conservation Area offers students, teachers, Clubs and Organizations the perfect outdoor venue. The SSMRCA Classroom is a focal point providing shelter, washrooms, kitchen facilities and lunch area. To make arrangement to use the classroom facility, please contact the Sault Ste. Marie Region Conservation Authority office.

Hours of Operation

The SSMRCA office is open Monday through Friday from 8:30 am to 4:30 p.m.

We welcome area residents and visitors to Sault Ste. Marie to enjoy the Hiawatha Highlands Conservation Area. Admission to all of our conservation areas is free.

Area Attractions

Kinsmen Park - Adjacent to the Hiawatha Highlands Conservation Area is Kinsmen Park boasting 93 hectares (230 acres) of land maintained by the Kinsmen Club of Sault Ste. Marie. The park includes one of the most spectacular views of Crystal Falls from the Ecology Trail or Crystal Creek Trail. The park also includes a baseball diamond, children's playground, picnic area, and swimming area.

Cross Country Ski Trails - During the winter months the Soo Finnish Nordic Ski Club maintain 50 km of Nordic, cross country ski trails catering to both the beginner and advanced skiers. Season and day passes as well as trail information are available online at www.hiawathahighlands.com.

Crystal Creek Mountain Bike Trail - A single track mountain bike trail for intermediate to advance riders. Approximate riding time 45 minutes to 1 1/2 hours.

Tarentorous Fish Culture Station - Open 9 a.m. to 5 p.m. daily, allows visitors to see various trout species being reared for the Ministry of Natural Resource's fish release program.

Mockingbird Hill Farm - Visitors to the area can step back in time and explore a pioneer farm. More information is available online at www.mockingbirdhillfarm.ca.

SSMRCA

Since 1963, the Sault Ste. Marie Region Conservation Authority has played an important role by developing and providing a comprehensive watershed management program to the city of Sault Ste. Marie and Prince Township.



1100 Fifth Line East
Sault Ste. Marie, ON P6A 5K7
Tel: (705) 946-8530 Fax: (705) 946-8533
www.ssmrca.ca nature@ssmrca.ca